

LED WRAPAROUND MHTi-STRP-SC SERIES



Project _____
Part Number _____
Quantity _____

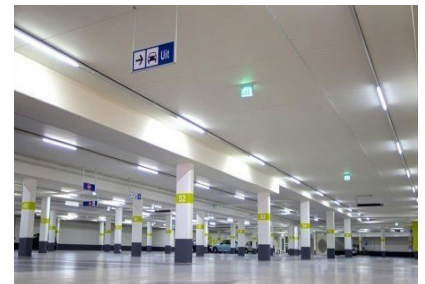


FEATURES

- >100,000 Hours Rated Lifespan
- 10-year Warranty
- L70 > 75,000 Hours
- Lightweight Aluminum Extrusion Housing
- Matte White Finished
- Wraparound Clear Prismatic Acrylic Lens
- Highly Reflective White Coating
- Standard Ceiling or Wall Surface Mount
- Optional Suspended Cable
- Available with Integrated Sensor
- Available Emergency Battery Backup
- Color Temperature 3000K to 5000K
- CRI > 85

APPLICATIONS

- Corporate Campus
- Data Center
- Education
- Healthcare
- Retail



Model	Input Power	Lm/W	Lumen	Dimensions
MHTi-STRP-SC-2FT-28E-3K	28W	100	2,800	24" x 4" x 3.5"
MHTi-STRP-SC-4FT-28E-3K	28W	100	2,800	48" x 4" x 3.5"
MHTi-STRP-SC-8FT-48E-3K	48W	100	4,800	96" x 4" x 3.5"



Manufactured in the USA

Toll Free **888.511.7780** • www.mhtlighting.com



LED WRAPAROUND MHTi-STRP-SC SERIES



Project _____

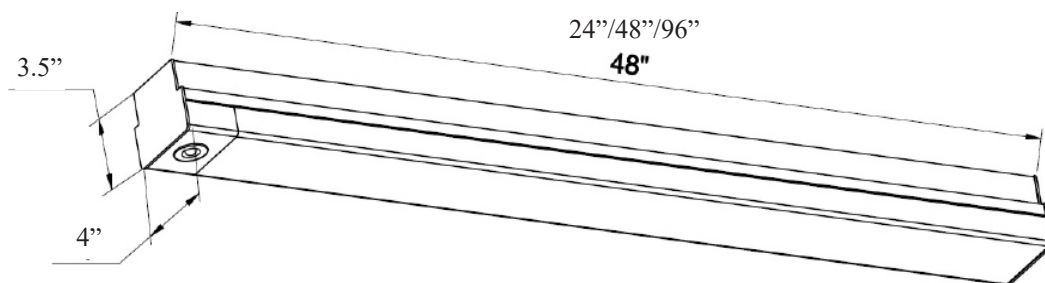
Part Number _____

Quantity _____

ORDERING CODES

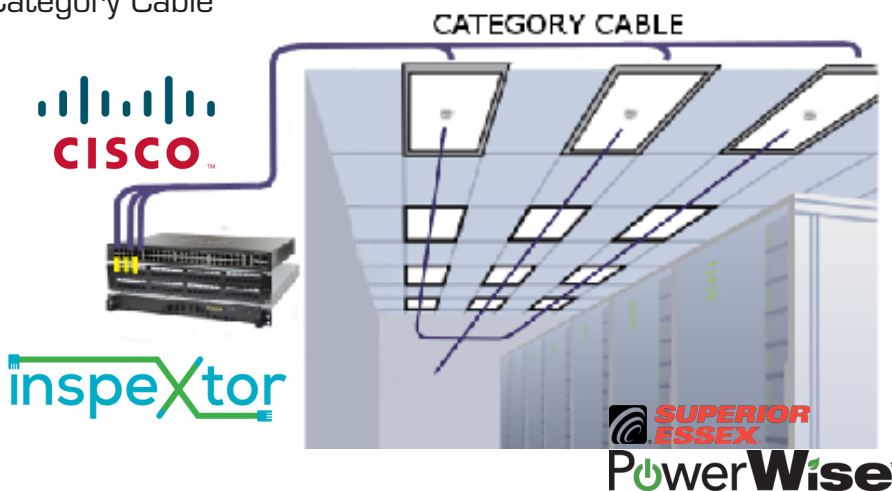
MHTi-STRP-SC	<input type="text"/>	<input type="text"/>	<input type="text"/>	<input type="text"/>
Size & Wattage:	Color Temperature:	Mounting:	Option:	
2FT-28E=2FT-28W	3K=3000K	AC=Suspended Cable Mount	(Standard in White)	
4FT-28E=4FT-28W	35K=3500K	SM=Surface Mount	EM=Emergency Battery	
8FT-48E=8FT-48W	4K=4000K			
	5K=5000K			

DIMENSIONS



SYSTEM BENEFITS

- Powered by CISCO - PowerWise Category Cable
- Real-time Energy Management
- Monitor Workplace Productivity
- Reduce Installation Time
- Reduce Material Costs
- Space Utilization Reporting
- Daylight Harvesting
- Real-time Security Alerts



- MHT Products are ETL Listed and Assembled in ISO9000/1 Certified US Facility
- MHT Lighting Offers a 10-year Warranty (See Warranty Terms and Conditions)
- Every Product is Quality Tested and Inspected Prior to Shipment
- Proudly Manufactured in the USA

MHT Manufacturing
1961 Richmond Terrace
Staten Island, New York 10302
Tel: 718.524.4370
Fax: 718.524.4390

West Coast Operations
2285 Michael Faraday Dr. Suite 10
San Diego, California 92154
Tel: 619.661.0600

www.mhtlighting.com
888.511.7780

MHT Confidential
Rev: December 2019