

# LED WRAPAROUND MHTi-STRP-SC SERIES



Project \_\_\_\_\_  
Part Number \_\_\_\_\_  
Quantity \_\_\_\_\_

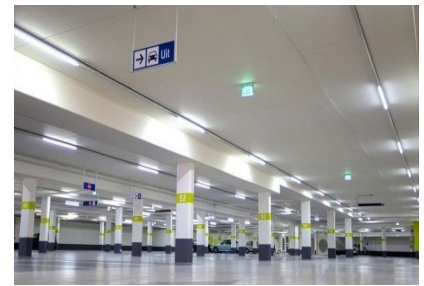


## APPLICATIONS

- Corporate Campus
- Data Center
- Education
- Healthcare
- Retail

## FEATURES

- >100,000 Hours Rated Lifespan
- 10-year Warranty
- L70 > 75,000 Hours
- Lightweight Aluminum Extrusion Housing
- Matte White Finished
- Wraparound Clear Prismatic Acrylic Lens
- Highly Reflective White Coating
- Standard Ceiling or Wall Surface Mount
- Optional Rod Pendant or Suspended Cable
- Complete with Integrated Sensor
- Available Emergency Battery Backup



## SPECIFICATIONS

- Color Temperature 3500K/4000K/5000K
- CRI > 85

Model	Input Power	Lm/W	Lumen	Dimensions
MHTi-STRP-SC-4FT-28E-35K	28W	>115	>3,000	48" x 4" x 3.5"
MHTi-STRP-SC-8FT-48E-35K	48W	>115	>5,600	96" x 4" x 3.5"



Manufactured in the USA

Toll Free **888.511.7780** • [www.mhtlighting.com](http://www.mhtlighting.com)



# LED WRAPAROUND MHTi-STRP-SC SERIES

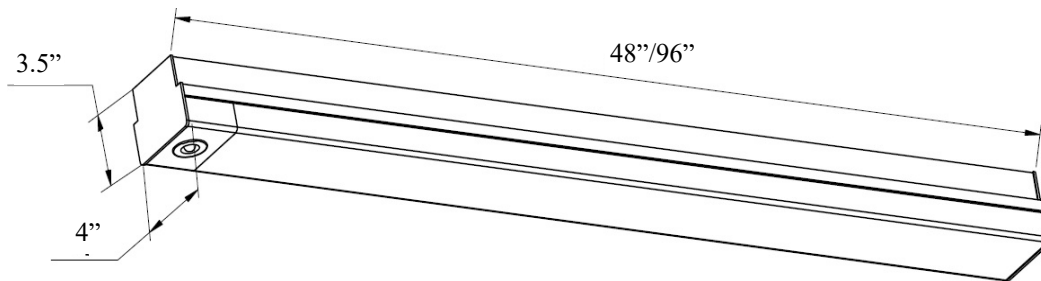


Project \_\_\_\_\_  
Part Number \_\_\_\_\_  
Quantity \_\_\_\_\_

## ORDERING CODES

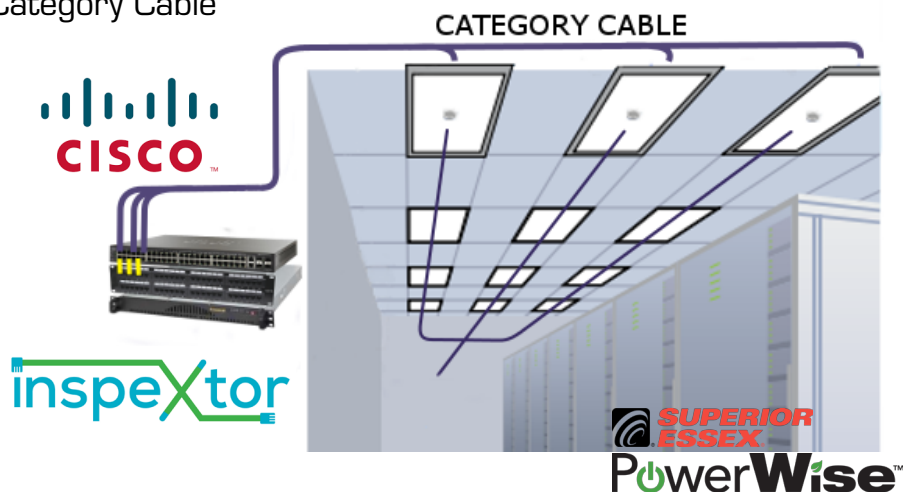
MHTi-STRP-SC	<input type="text"/>	<input type="text"/>	<input type="text"/>	<input type="text"/>
<b>Size &amp; Wattage:</b>	<b>Color Temperature:</b>	<b>Mounting:</b>	<b>Option:</b>	
4FT-28E=4FT-28W	35K=3500K	AC=Suspended Cable (Standard 3ft)	(Standard in White)	
8FT-48E=8FT-48W	4K=4000K	PM=3/8" Threaded Rod Pendant	EM=Emergency Battery	
	5K=5000K	SM=Wall or Ceiling Surface Mount		

## DIMENSIONS



## SYSTEM BENEFITS

- Powered by CISCO - PowerWise Category Cable
- Real-time Energy Management
- Monitor Workplace Productivity
- Reduce Installation Time
- Reduce Material Costs
- Space Utilization Reporting
- Daylight Harvesting
- Real-time Security Alerts



- MHT Products are ETL Listed and Assembled in ISO9000/1 Certified US Facility
- MHT Lighting Offers a 10-year Warranty (See Warranty Terms and Conditions)
- Every Product is Quality Tested and Inspected Prior to Shipment
- Proudly Manufactured in the USA

**MHT Manufacturing**  
1961 Richmond Terrace  
Staten Island, New York 10302  
Tel: 718.524.4370  
Fax: 718.524.4390

**West Coast Operations**  
2285 Michael Faraday Dr. Suite 10  
San Diego, California 92154  
Tel: 619.661.0600

[www.mhtlighting.com](http://www.mhtlighting.com)  
**888.511.7780**

MHT Confidential  
Rev: April 2018