

LED SHOEBOX

MHTL-SB SERIES

Project _____

Part Number _____

Quantity _____



APPLICATIONS

- All Area/Flood Applications
- Parking Lot
- Park

FEATURES

- >100,000 Hours Rated Lifespan
- 10-year Warranty
- L90 > 100,000 Hours
- Die Cast Aluminum Housing (Dark Bronze)
- Open Top Design for Better Ventilation and Air Flow
- High Performance Acrylic Optical Lens
- Fixture Protection Class IP65
- Multiple Mounting and Distribution Options
- Down Lighting Applications
- TAA/BAA Compliant



LED/DRIVER

- Universal Input Voltage 120~277V
- Optional Input Voltage 347V/480V
- Power Factor > 0.93 @277V
- THD < 17 % @277V; CRI > 75
- Surge Protection - Optional 20kV
- Color Temperature 4000K/5000K
- 0-10V Dimming Driver
- IP67 Rated LED Driver and Module

Model	Input Power	Lumen	Dimensions	EPA at 0° (ft ²)
MHTL-SB-135E-5K-U	135W	13,600	19.5" x 13.1" x 4.6"	1.7
MHTL-SB-185E-5K-U	185W	20,000	19.5" x 13.1" x 4.6"	1.7
MHTL-SB-210E-5K-U	210W	22,500	19.8" x 18.5" x 4.6"	2.5
MHTL-SB-255E-5K-U	255W	26,600	19.8" x 18.5" x 4.6"	2.5
MHTL-SB-325E-5K-U	325W	33,000	19.8" x 18.5" x 4.6"	2.5
MHTL-SB-425E-5K-U	425W	42,300	24.9" x 24" x 4.6"	4.1
MHTL-SB-520E-5K-U	520W	55,400	24.9" x 24" x 4.6"	4.1



Manufactured in the USA

Toll Free **888-511-7780** • www.mhtlighting.com



LED SHOEBOX

MHTL-SB SERIES

Project _____

Part Number _____

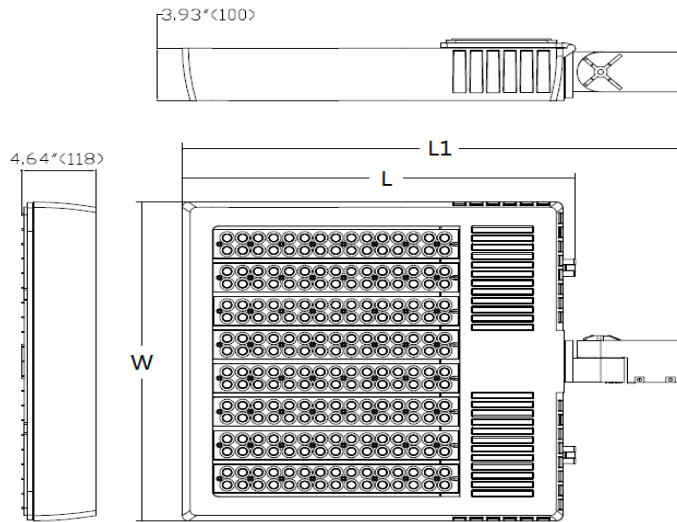
Quantity _____

ORDERING CODES

MHTL-SB	<u> </u> E	<u> </u>	<u> </u>	<u> </u>	<u> </u>	<u> </u>
Wattage:	Color Temp:	Input Voltage:	Distribution:	Mounting:	Option:	
135, 185, 210, 255, 325, 425, 520	4K=4000K 5K=5000K	U=120-277V 347=347V 480=480V	T3=Type III T5=Type V 33=3 X 3 55=5 X 5 66=6 X 6	EA6=6" Arm EA10=10" Arm SF=Slip Fitter SW=Swivel Mount WM=Wall Mount Bracket	PR3=3-pin Photocell Receptacle PR7=7-pin Photocell Receptacle PC3=3-pin Photocell PC7=7-pin Photocell SC=Shorting Cap TC=Top Cover VISOR=Glare Shield (Uplight Shield) BLS=Backlight Shield SPD=20kV/15kA Surge Protective Device OS-On/Off=On/Off Only Motion Sensor OS-Dim=Dimming & On/Off Motion Sensor (See "Smart" Series for Details)	

All Models in 4000K are DLC Listed Product

DIMENSIONS



MOUNTING OPTIONS



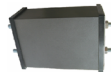
SF - Slip Fitter (O.D. 2-3/8" Round Pole)
(Adjustable. 1ft Leads are Included)



WM - Wall/Surface Mount Bracket
(Used with Slip Fitter)



SW - Swivel/Surface Mount Bracket
(Adjustable. 1ft Power Cord is Included)



EA - 6" or 10" Aluminum Extruded Arm
(For Square Pole Use. 1ft Power Cord is Included)

	inch (mm)		
Input Power	L	L1 (w/ SF)	W
135W / 185W	19.52 (496)	25.92 (658)	13.17 (335)
210W / 255W / 325W	19.79 (503)	26.19 (665)	18.54 (471)
425W / 520W	24.90 (633)	31.53 (801)	24.00 (609)

- MHT Products are ETL Listed and Assembled in ISO9000/1 Certified US Facility
- MHT Lighting Offers a 10-year Warranty (See Warranty Terms and Conditions)
- Every Product is Quality Tested and Inspected Prior to Shipment
- Proudly Manufactured in the USA
- For Product IES Files Please Contact Your Local Reps

MHT Plant Operations
1961 Richmond Terrace
Staten Island, New York 10302
Tel: (718) 524-4370
Fax: (718) 524-4390

West Coast Operations
2285 Michael Faraday Dr. Suite 10
San Diego, California 92154
Tel: (619) 661-0600

www.mhtlighting.com
888-511-7780

MHT Confidential
Rev Date: May 2018