

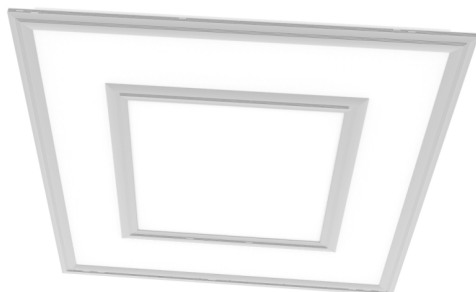
LED FLAT PANEL

MHTL-PAN-DIR-XC SERIES

Project _____

Part Number _____

Quantity _____



APPLICATIONS

- Conference/Meeting Room
- Commercial Building
- Healthcare
- Office and School

FEATURES

- 10-year Warranty
- >100,000 Hours Rated Lifespan
- L70 > 67,000 Hours
- Aluminum Extrusion Construction
- High Performance Acrylic Lens
- No Glare and Full Even Light Distribution
- 1/2" Knock-outs on Top Access Panel
- Standard Ceiling Grid Mount with Cable Mount Brackets
- Available Ceiling Surface Mount Kit or Drywall Mount Kit
- Optional Integrated Occupancy Sensor (See "Integrated Control")
- Optional Integrated Emergency Battery Backup



LED/DRIVER

- Universal Input Voltage 120 - 277V
- Optional Input Voltage 347V/480V
- Surge Protection
- 0-10V Dimmable Driver
- CRI > 85
- Color Temperature 3000K - 5000K
- THD < 10% @120V
- Power Factor > 0.98 @120V

Model	Input Power	Lumen	Dimensions
MHTL-PAN-DIR-XC-2X2-38E-4K-U	38W	> 4,200	23.75" x 23.75" x 1.8"
MHTL-PAN-DIR-XC-2X4-53E-4K-U	53W	> 6,000	23.75" x 47.75" x 1.8"



Manufactured in the USA

Toll Free **888-511-7780** • www.mhtlighting.com



LED FLAT PANEL

MHTL-PAN-DIR-XC SERIES

Project _____

Part Number _____

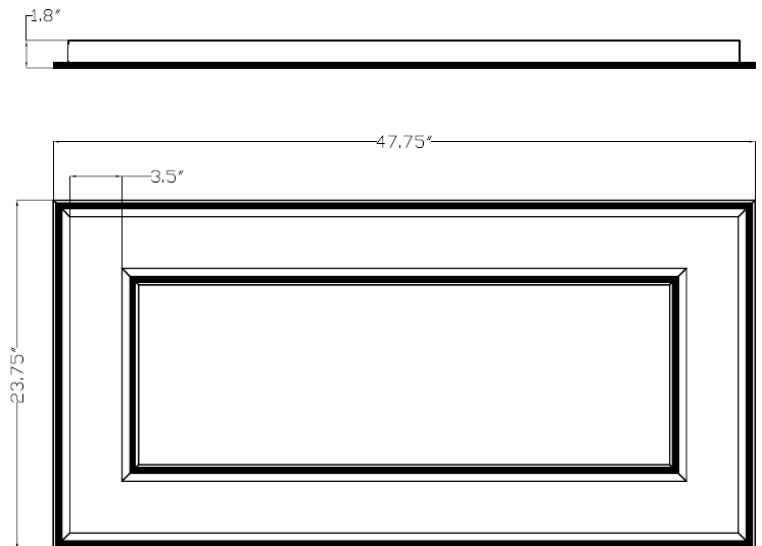
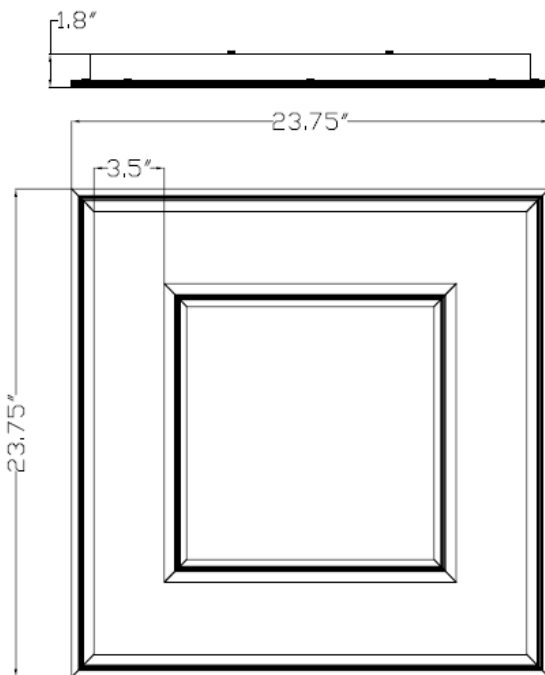
Quantity _____

ORDERING CODES

MHTL-PAN-DIR-XC					
	<u>Wattage:</u>	<u>Color Temp:</u>	<u>Input Voltage:</u>	<u>Mounting:</u>	<u>Option:</u>
	2X2-38E	3K=3000K	U=120-277V	SM=Surface	(Standard in Aluminum Trim)
	2X4-53E	35K=3500K	347=347V	DK=Drywall Kit	AC=Aircraft Cable
		4K=4000K	480=480V	PM=3/8"	EB=Emergency Battery Backup
		5K=5000K		Threaded Rod	OS-On/Off=On/Off Only Motion Sensor
					OS-Dim=Dim & On/Off Motion Sensor
					(See "Integrated Control" Series for Details)

MHTL-PAN-DIR-2X4-53E-4K-U is DLC Listed Product

DIMENSIONS



- MHT Products are ETL Listed and Assembled in ISO9000/1 Certified US Facility
- MHT Lighting Offers a 10-year Warranty (See Warranty Terms and Conditions)
- Every Product is Quality Tested and Inspected Prior to Shipment
- Proudly Manufactured in the USA
- For Product IES Files Please Contact Your Local Reps

MHT Plant Operations

1961 Richmond Terrace
Staten Island, New York 10302
Tel: (718) 524-4370
Fax: (718) 524-4390

West Coast Operations

2285 Michael Faraday Dr. Suite 10
San Diego, California 92154
Tel: (619) 661-0600

www.mhtlighting.com

888-511-7780

MHT Confidential
Rev Date: December 2017