

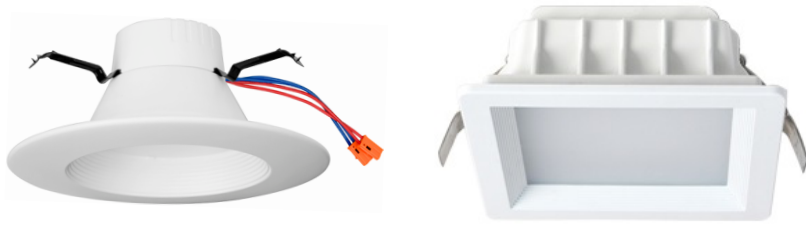
# LED DOWN LIGHT RETROFIT

## MHTL-DL-XC Low Power Series

Project \_\_\_\_\_

Part Number \_\_\_\_\_

Quantity \_\_\_\_\_



### APPLICATIONS

- Airport, Corporate Campus
- Data Center, Healthcare, Retail

### FEATURES

- >50,000 Hours Rated Lifespan
- 5-year Warranty
- L70 > 50,000 Hours
- Aluminum Housing with LED Driver on Top
- Spring Clips Provide Easy Retrofit Installation
- CFL Ballast Compatible - Direct Replacement
- Designed to Fit Most Existing IC or Non-IC Housing
- 4" or 6" Square Down Light is Available Upon Request
- Energy Star Listed, UL Listed, T24 Listed
- Wet Location Rated



### SPECIFICATIONS

- Standard Input Voltage 110 - 277V
- Operation Frequency 60Hz
- Fixture Efficiency > 85%
- CRI 80 or CRI 90
- Surge Protection
- Color Temperature 3000K - 5000K
- THD < 17% @277V
- Power Factor > 0.90 @277V

Model	Input Power	CCT	Lm/W	Lumen	Dimensions
MHTL-DL-XC-4-9W-35K-U	9W	3500K	80	720	Ø5.10" x 3.47"
MHTL-DL-XC-6-13W-35K-U	13W	3500K	80	1040	Ø7.40" x 3.31"



Manufactured in the USA

Toll Free **888-511-7780** • [www.mhtlighting.com](http://www.mhtlighting.com)



# LED DOWN LIGHT RETROFIT

## MHTL-DL-XC Low Power Series

Project \_\_\_\_\_

Part Number \_\_\_\_\_

Quantity \_\_\_\_\_

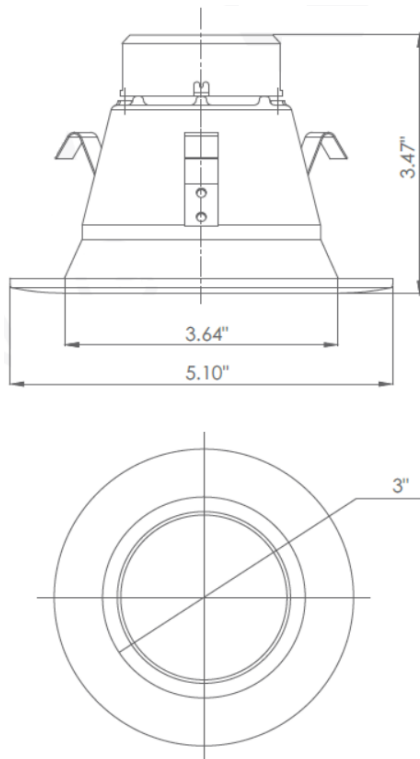
### ORDERING CODES

MHTL-DL-XC			U		
<u>Size and Wattage:</u>	<u>Color Temperature:</u>	<u>Input Voltage:</u>	<u>CRI:</u>	<u>Option:</u>	
4-9W=4" 9W	3K=3000K	U=110-277V	80=CRI 80	(Standard in White Trim)	
6-13W=6" 13W	35K=3500K		90=CRI 90	DB=Triac Dimming	
	4K=4000K				
	5K=5000K				

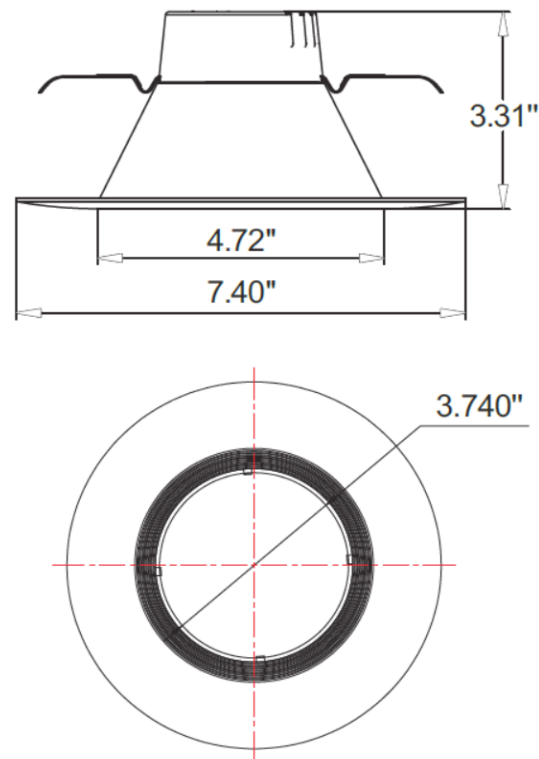
**\*DLS Series is Available Upon Request (4" or 6" Square Down Light)**

### DIMENSIONS

MHTL-DL-XC-4-9W



MHTL-DL-XC-6-13W



- MHT Products are UL Listed Assembled in ISO9000/1 Certified US Facility
- MHT Lighting Offers a 5-year Warranty (See Warranty Terms and Conditions)
- Every Product is Quality Tested and Inspected Prior to Shipment
- Proudly Manufactured in the USA
- For Product IES Files Please Contact Your Local Reps

#### MHT Plant Operations

1961 Richmond Terrace  
Staten Island, New York 10302  
Tel: (718) 524-4370  
Fax: (718) 524-4390

#### West Coast Operations

2285 Michael Faraday Dr. Suite 10  
San Diego, California 92154  
Tel: (619) 661-0600

[www.mhtlighting.com](http://www.mhtlighting.com)

**888-511-7780**

MHT Confidential  
Rev Date: December 2017